



### Principal's Message

#### Attendance

Education for your child is important and regular attendance at school is essential for your child to achieve their educational best and increase their career and life options. NSW public schools work in partnership with parents to encourage and support regular attendance of children. When your child attends school every day, learning becomes easier and your child will build and maintain friendships with other children.

It is also important that children arrive to school on time. This ensures:

- Students do not miss out on important learning activities scheduled early in the day
- Students learn the importance of punctuality and routine
- Students have time to greet their friends, develop and maintain friendships
- Students develop a sense of belonging
- Students become more engaged at school
- Classroom disruption is reduced
- Students are more aware of career and life options

Every day counts. Missing just one day a fortnight can amount to four weeks of lost learning over a year. Over their school life, this can equal one year of missed learning.

If for any reason your child does not attend school it is important that you notify your child's teacher or the office as soon as possible. This can be done by phoning the school office or sending a message via School Stream, however, if an explanation has not been received within two days, the school may contact you to discuss the absence as per our attendance procedures and in compliance with the Department of Education attendance policy.

The Department of Education recognises that working collaboratively with students and their families is the best way to support the regular attendance of students at school. We look forward to working in partnership with you to support your child to fulfil their life opportunities.

#### Communication

Communication is very important at Miranda North Public School. We have a variety of communication methods (listed below) to inform our parents/carers and community of what is happening in our school and about other activities. If you need assistance with accessing any of our communication channels please speak to our lovely office staff. We are here to help you.



Please remember that I will continue to provide our community with regular updates and information as advice and directives are received from the Department of Education and NSW Health.

Our school website <https://mirandanth-p.schools.nsw.gov.au/> is another place where you can find lots of information with regular updates by the Department. It also contains a wonderful parent numeracy resource which provides great ideas on numeracy learning and how best to support your child at home.

Our Miranda North School Stream app which is free to download for any device is used to update our community with important notifications, upcoming events and notes published. One of the most popular forms of communication enjoyed by parents are the classroom apps, Dojo and See-Saw. This allows teachers to individually inform parents of their child's learning by uploading work samples, images and videos. It also enables parents to directly communicate to the teacher with any concerns.

## **School Community Charter**

Attached to this weeks newsletter is the Department of Education School Community Charter. It clearly identifies the type of school community commitment required from everyone to ensure a collaborative culture underpins all that we do. We all want the best possible environment for our students so that they can connect grow and thrive. This is very evident in our Miranda North Community making our school such a special place to work and learn each and every day.

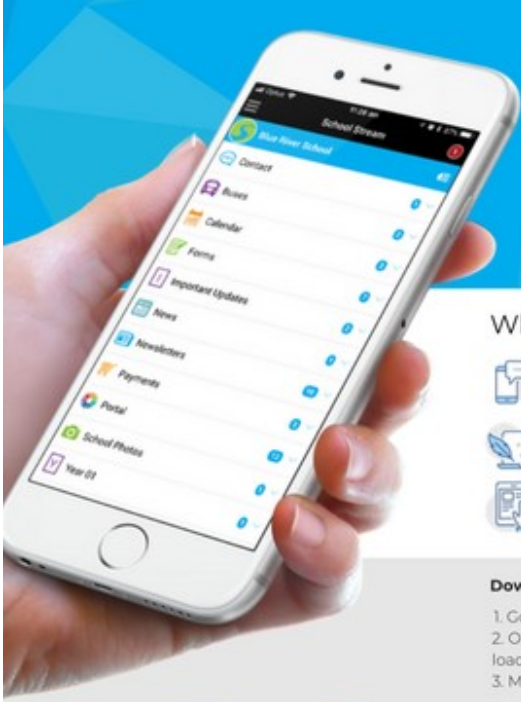
## **Meet the Teacher information**

This year due to restrictions in numbers of adults gathering together we will provide our Stage information sessions online. This will provide all parents regardless of availability a copy of materials that they can keep and revisit and print at a time convenient to your families need. If you have any questions once you have had time to look at the materials please don't hesitate to reach out for clarification. It is very important to our school that it meets your needs and supports your child's learning We will also provide all families with a parent teacher interview in Week 8 with your child present to discuss learning goals for the year. This is available in person or virtually if you would prefer. Information regarding our online booking system will be distributed in the next few weeks.

### **Upcoming events**




1 March	-	Zone Rugby League trials	18 March	-	School photos
2 March	-	Zone Swimming Carnival	25 March	-	Zone Football trials
9 March	-	P & C AGM	29 March	-	Zone Rugby Union trials
11 March	-	Selective High School test	1 April	-	Last day of Term 1
12 March	-	Stage 3 LEAD Incursion	20 April	-	First day of Term 2

## School app



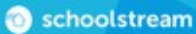
# Download our school app for free!

### Why download the app?

-  Receive instant notifications for important news.
-  Easily register absentees and excursions.
-  Keep up to date with events and set reminders.

**Download instructions:**

1. Go to the App Store and download "School Stream" to your phone.
2. Open the app and type the school's name into the search bar to load the school's profile.
3. Make sure you agree to Push Notifications when prompted.

 [facebook.com/SchoolStream](https://www.facebook.com/SchoolStream)  
[twitter.com/SchoolStreamApp](https://twitter.com/SchoolStreamApp)

## Lunch orders

### REGISTER



**1** Go to [www.flexischools.com.au](http://www.flexischools.com.au) and select the **REGISTER** option and enter your email address.



**2** You will be sent a registration email. Click on the link in the email to complete the registration.



**3** Fill in your details on the Registration Form and click "submit".



**4** Add your students, select their school and class.

### ORDER

**1** Go to [www.flexischools.com.au](http://www.flexischools.com.au) and select the **LOGIN** option. Click on "Start an order" for your student.

**2** Select the service you wish to purchase from. You can also set up orders in advance.

**3** Add each of your items. Extras and options will appear where relevant to the item.

**4** Select your payment option. Pay for the one order or "top up" your account. Complete payment to place order.





## School Photo Day Thursday March 18

Please note our school photo day is Thursday 18 March. Envelopes are being sent home this week. **Please do not return the envelope until photo day.** Orders can be made online or paid by cash placing the correct money into the envelope and returning it to school on photo day to your child's classroom teacher first thing in the morning. Siblings envelopes are available at the office. If you are ordering a sibling photo please direct your child to visit the hall at lunch with their sibling. All students should be dressed in full summer uniform with black school shoes and wearing their best smiles.

## CLASSROOM NEWS

KL are settling well into school routines. We have been enjoying learning how to be good listeners and developing our fine motor skills, beginning to read and write and engaging in developmental play sessions. We look forward to lots more learning in KL.



KL



Classroom

News





# School Community Charter

 **Collaborative. Respectful. Communication.**

The following School Community Charter outlines the responsibilities of parents, carers, educators and school staff in NSW public schools to ensure our learning environments are collaborative, supportive and cohesive.

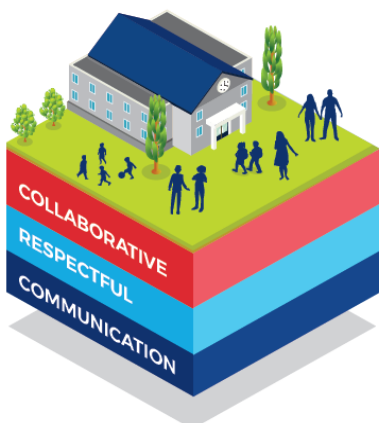
We treat each other with **respect**

## What our schools provide

NSW public schools work to create positive environments for students, staff and the entire school community that support student learning. We strive to ensure that every student is known, valued and cared for.

The best education happens when parents and schools work together.

The School Community Charter aligns with the NSW Department of Education Strategic Plan 2018 – 2022.



## Positive environments

It is important that our NSW public schools are positive environments and that parents and carers are kept informed of students' progress and school announcements.

Parents and carers can expect:

- To be welcomed into our schools to work in partnership to promote student learning.
- Communication from school staff will be timely, polite and informative.
- Professional relationships with school staff are based on transparency, honesty and mutual respect.
- To be treated fairly. Tolerance and understanding are promoted as we respect diversity.

We **prioritise** the wellbeing of all students and staff

**Unsafe behaviour** is not acceptable in our schools

We work **together** with the school

**Ensuring respectful learning environments for all members of NSW Public Schools communities.**



We create  
**collaborative**  
learning  
environments

We  
all play  
**our part**

We work  
**in partnership**  
to promote  
student  
learning

## Communicating with our schools

Our staff will find a time to talk to you when they can give you their full attention. Please remember that while our staff are in class or dealing with other matters, they may not be available to answer your questions immediately.

Our schools and communities will make sure that written communication is appropriate, fair and easy to read. We encourage you to use email and social media appropriately to connect with your school and stay up-to-date with up-coming events in the school community.

Our guide for parents, carers and students provides useful information about the complaints process:

[education.nsw.gov.au/about-us/rights-and-accountability/complaints-compliments-and-suggestions/guide-for-parents-carers-and-students](https://education.nsw.gov.au/about-us/rights-and-accountability/complaints-compliments-and-suggestions/guide-for-parents-carers-and-students)

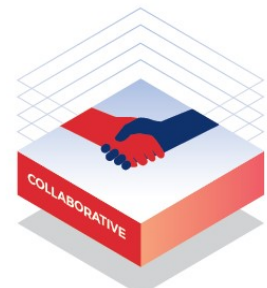
## Respectful communication is a right

In all workplaces people have the right to feel respected. Unacceptable and offensive behaviour has no place in our school communities.

To ensure the wellbeing of students, staff and the community in our schools, steps will be taken to address unacceptable behaviour. This may include restricting contact with the school community or, in more serious cases, referral to NSW Police.

### Unacceptable behaviour may include but is not limited to:

- Aggressive or intimidating actions, such as violence, threatening gestures or physical proximity.
- Aggressive or intimidating language, including the use of obscenities, making sexist, racist or derogatory comments or using a rude tone.
- Treating members of the school community differently due to aspects such as their religion or disability.
- Inappropriate and time wasting communication.



**Collaborative.**  
**Respectful.**  
**Communication.**

**School Community Charter**

education.nsw.gov.au